

# *Manual Speedo*



*The invisible high-tech GPS Solution*

*For Car, Truck, Trailer, Container, Boat, Motorbike, Personal Belongings and more.*



## Content

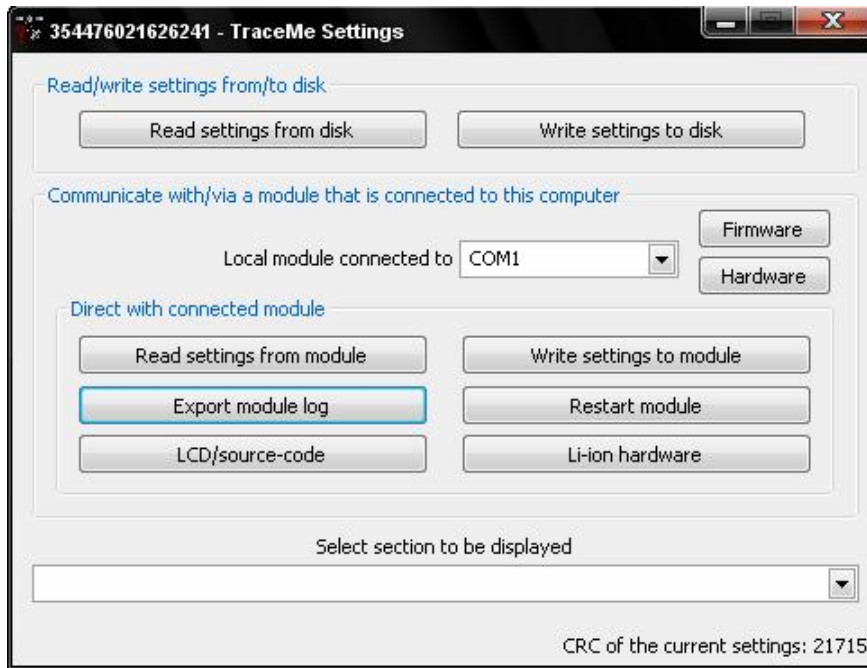
1	How it works .....	4
1.1	Downloading to a web based solution .....	5
1.2	Downloading to Export Files .....	6

# 1 How it works

The Speedo is easy to use.

After installation, the data can be downloaded to a PC, using the Speedo Setting Software.

- Connect the Speedo Setup Cable to the 24 pin connector at the rear side of the Speedo
- Start the StreamLine Setup Software
- Select: Export Module Log
- Select the desired output



Note: When the software mentions that you have to power down the module and power up again in 10 seconds, it means that the serial port for downloading the data has been configured incorrectly. Disconnecting the module from the power supply can lead to small data loss and is therefore not recommended.

## 1.1 Downloading to a web based solution

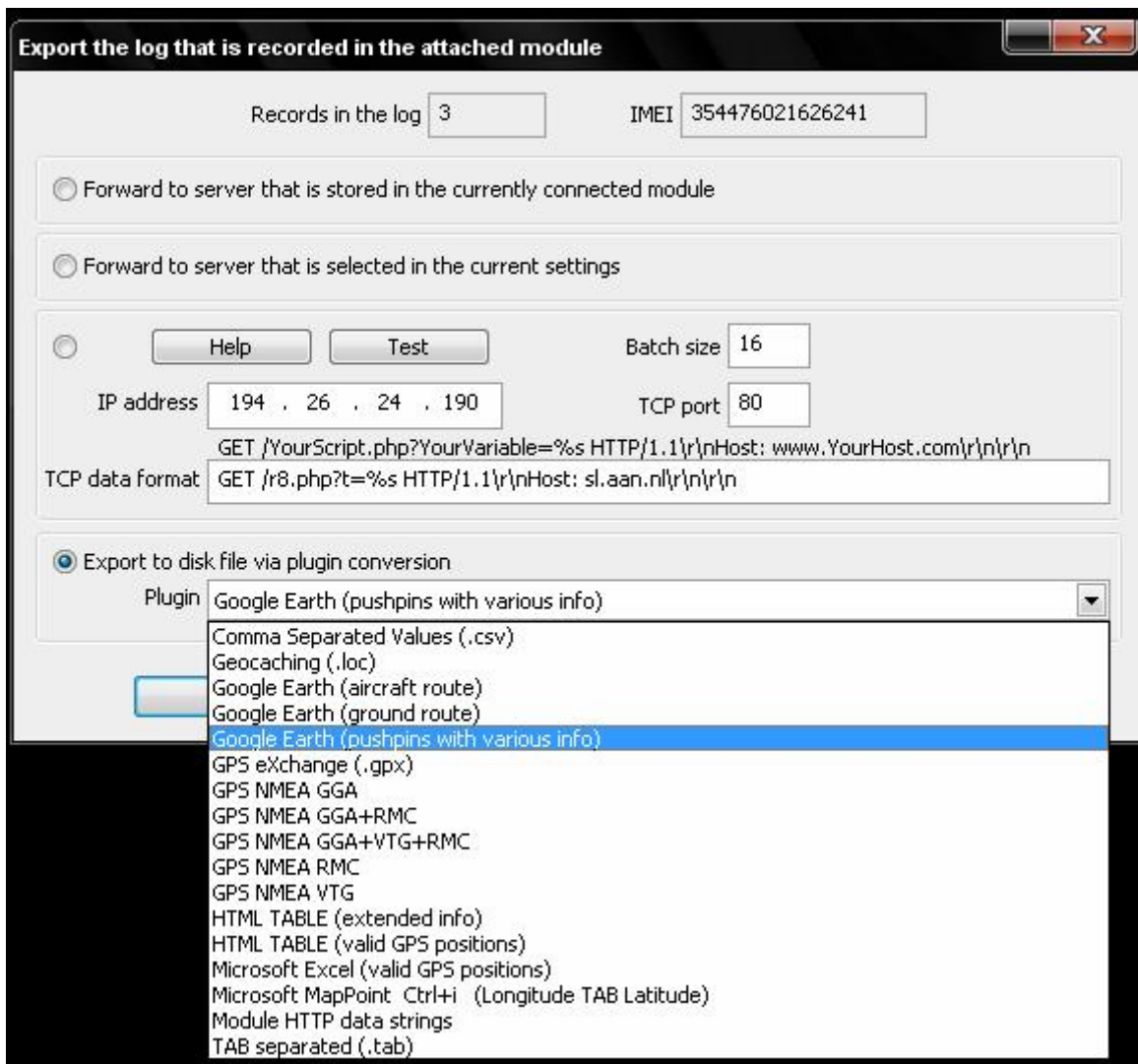
Data can be downloaded to a web based solution. Please contact the distributor for the possibilities for this downloading format.

The screenshot shows a software window titled "Export the log that is recorded in the attached module". At the top, it displays "Records in the log" with a value of 3 and "IMEI" with a value of 354476021626241. Below this, there are three radio button options for where to forward the log data. The first two options are "Forward to server that is stored in the currently connected module" and "Forward to server that is selected in the current settings". The third option is selected and includes a "Help" button, a "Test" button, a "Batch size" field with the value 16, an "IP address" field with the value 111 . 222 . 255 . 190, and a "TCP port" field with the value 80. Below these fields is a "TCP data format" field containing the text "YOUR web based script" and a preview of an HTTP request: "GET /YourScript.php?YourVariable=%s HTTP/1.1\r\nHost: www.YourHost.com\r\n\r\n". At the bottom, there is a "Plugin" dropdown menu set to "HTML TABLE (extended info)". Two buttons, "Export log" and "Clear log", are located at the bottom of the window.

Eg. For this, you will need the name of the script, the ip address and the port for the transmission of the data to the web based solution.

## 1.2 Downloading to Export Files

There are many different possibilities for downloading the data to Export Files.



or the export formats provided, you will need to install the applications which can handle the data. Eg. Google Earth or Microsoft Excel or any other software required for displaying the gps positions.